



**The Wind Energy
Hub of the Future**

Portsmouth Marine Terminal

The Port of Virginia

Port of Virginia Advantages:

- 50 ft. shipping channels, currently being deepened to 55 ft.
- Only 18 miles from open sea and **no overhead aerial obstructions**
- Central mid-Atlantic location on the East Coast
- Strong terminal infrastructure and robust intermodal connections
- \$800M+ invested on-terminal over the past 36 months
- Expansion capabilities (CIMT)
- Significant maritime workforce



Portsmouth Marine Terminal (PMT)

- January 2020- VPA Board passes a resolution to lease up to 40 AC to Orsted for project staging and load-out
- May 2020- Cease Container Operations at PMT
- \$40M in the Governor's budget to fund capital improvements and infrastructure to Support OSW (funds require MEI approval)
- August 2021- The Port of Virginia leases 72 AC to Dominion for staging and load-out of the CVOW project
- October 2021- The Port of Virginia announces a lease to SGRE for 80+ AC to construct a blade coating facility at PMT
- December 2021- The Port of Virginia is awarded through MARAD a Port Infrastructure Development Program (PIDP) grant of \$20M for PMT upgrades associated with OSW
- March 2022- The Port of Virginia issues an IFB for the construction improvements to PMT for the staging and loadout of OSW components



Infrastructure Investments at PMT

MEI approved incentive for
SGRE

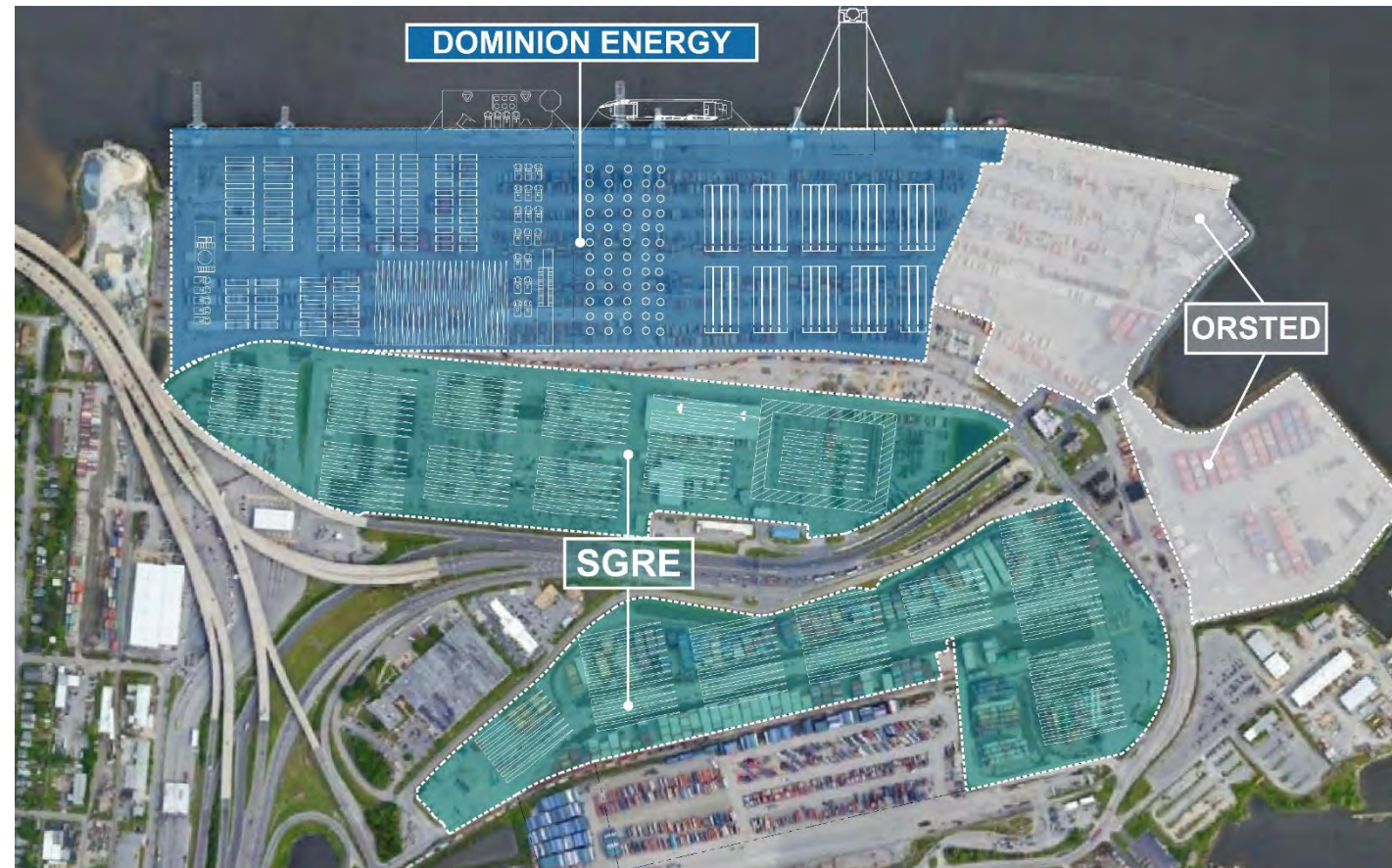
\$17M General Fund

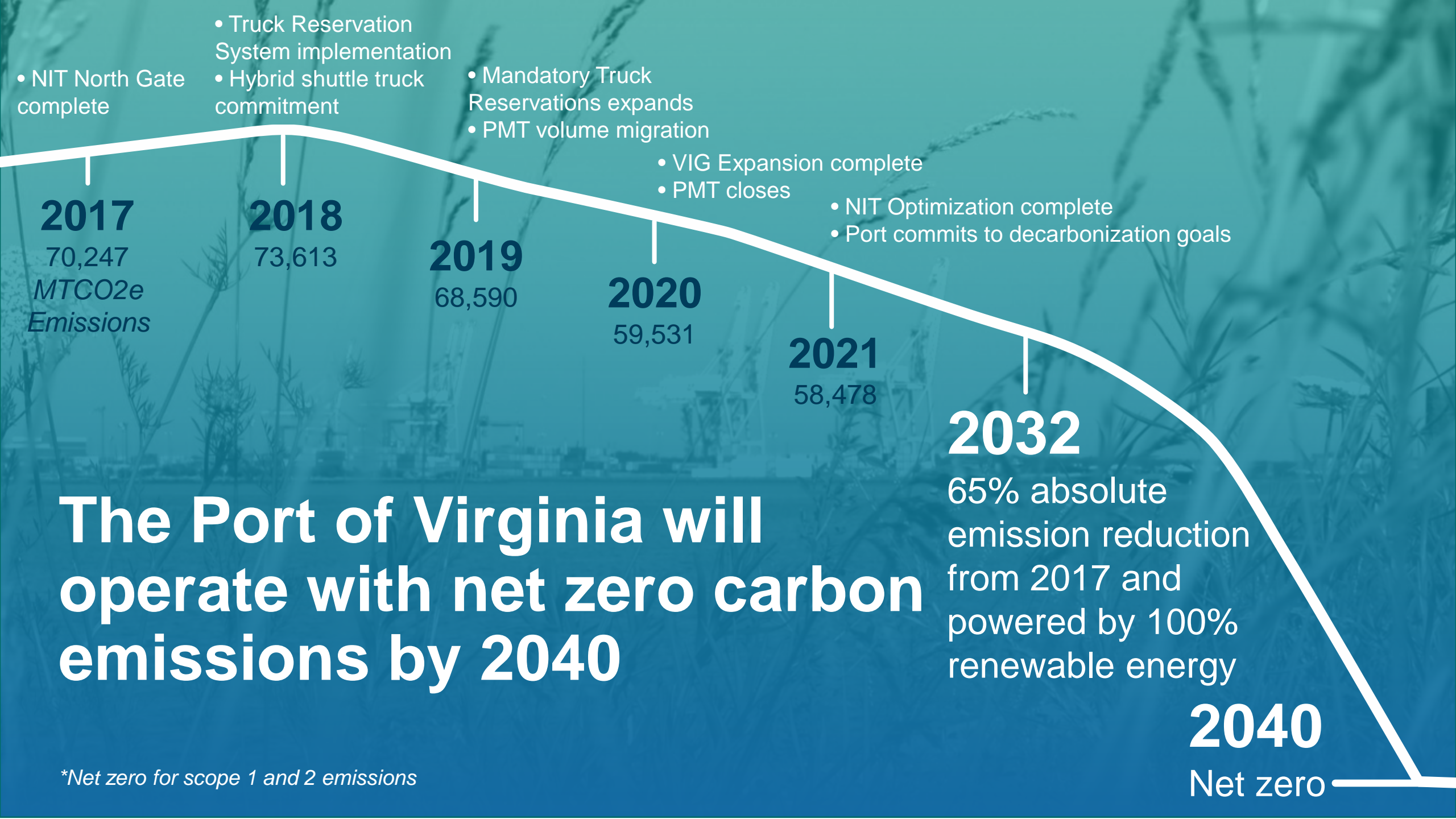
Infrastructure Upgrades

\$23M Public Building Authority
Bonds (Authorized Special
Session 2021)

\$20M Federal Port Infrastructure
Development Grant

Est. \$148M+ Additional
Investment





2017
70,247
MTCO2e
Emissions

2018
73,613

2019
68,590

2020
59,531

2021
58,478

2032

65% absolute emission reduction from 2017 and powered by 100% renewable energy

2040
Net zero

The Port of Virginia will operate with net zero carbon emissions by 2040

*Net zero for scope 1 and 2 emissions

Decarbonization Commitments



2032:

65% absolute reduction in green house gas emissions from 2017



2032:

Power port operations with 100% renewable energy



2040:

Net zero carbon emissions

The background image shows a port terminal under a clear sky. A tall, slender wind turbine stands on the left side. In the foreground, a truck is visible, carrying a large, circular object covered in a white tarp. The entire scene is overlaid with a semi-transparent teal color. The text is centered in a bold, white, sans-serif font.

Portsmouth Marine Terminal The Wind Energy Hub of the Future