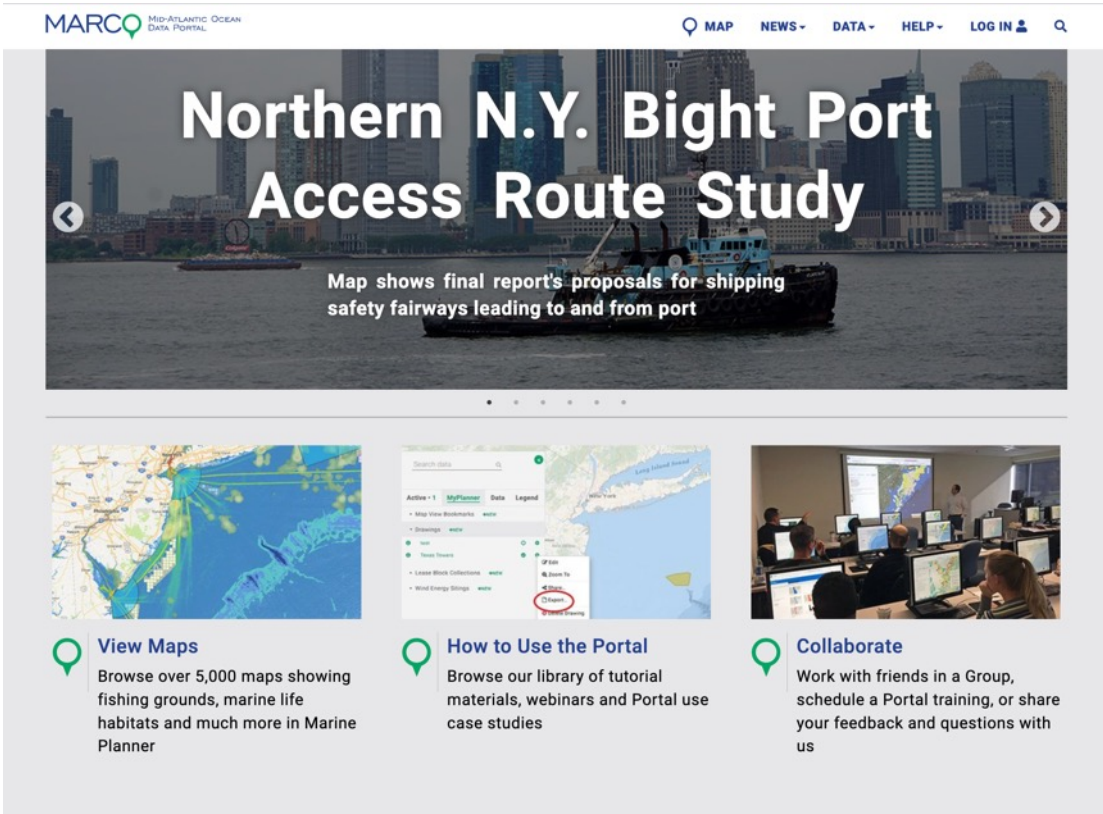


Using the Mid-Atlantic Ocean Data Portal to Understand Maritime Patterns

MAY 6 2022

Nick Napoli
MARCO Senior Advisor
NROC Executive Director

What's on the Portal?



MARCO MID-ATLANTIC OCEAN DATA PORTAL

MAP NEWS DATA HELP LOG IN

Northern N.Y. Bight Port Access Route Study

Map shows final report's proposals for shipping safety fairways leading to and from port

View Maps
Browse over 5,000 maps showing fishing grounds, marine life habitats and much more in Marine Planner

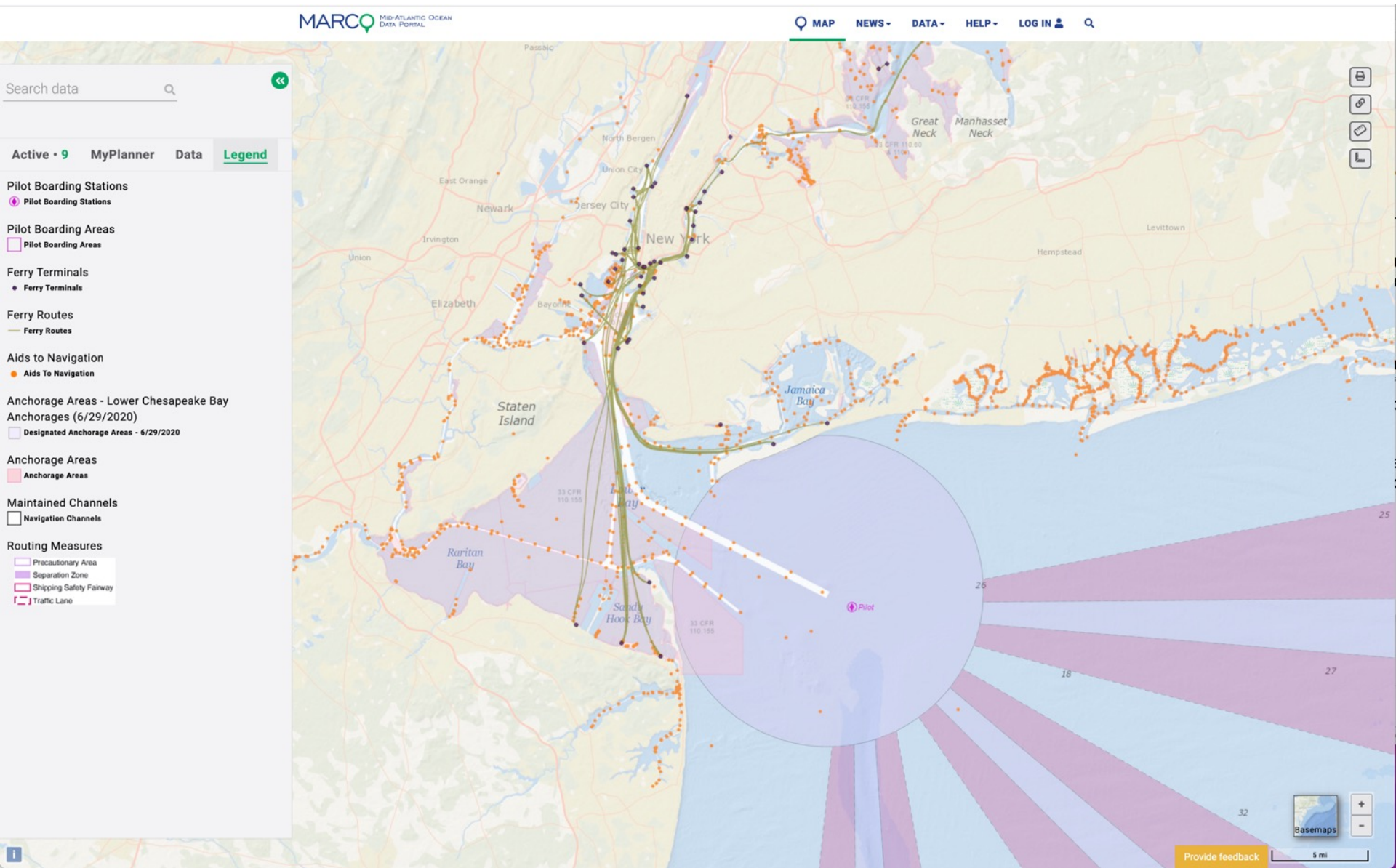
How to Use the Portal
Browse our library of tutorial materials, webinars and Portal use case studies

Collaborate
Work with friends in a Group, schedule a Portal training, or share your feedback and questions with us

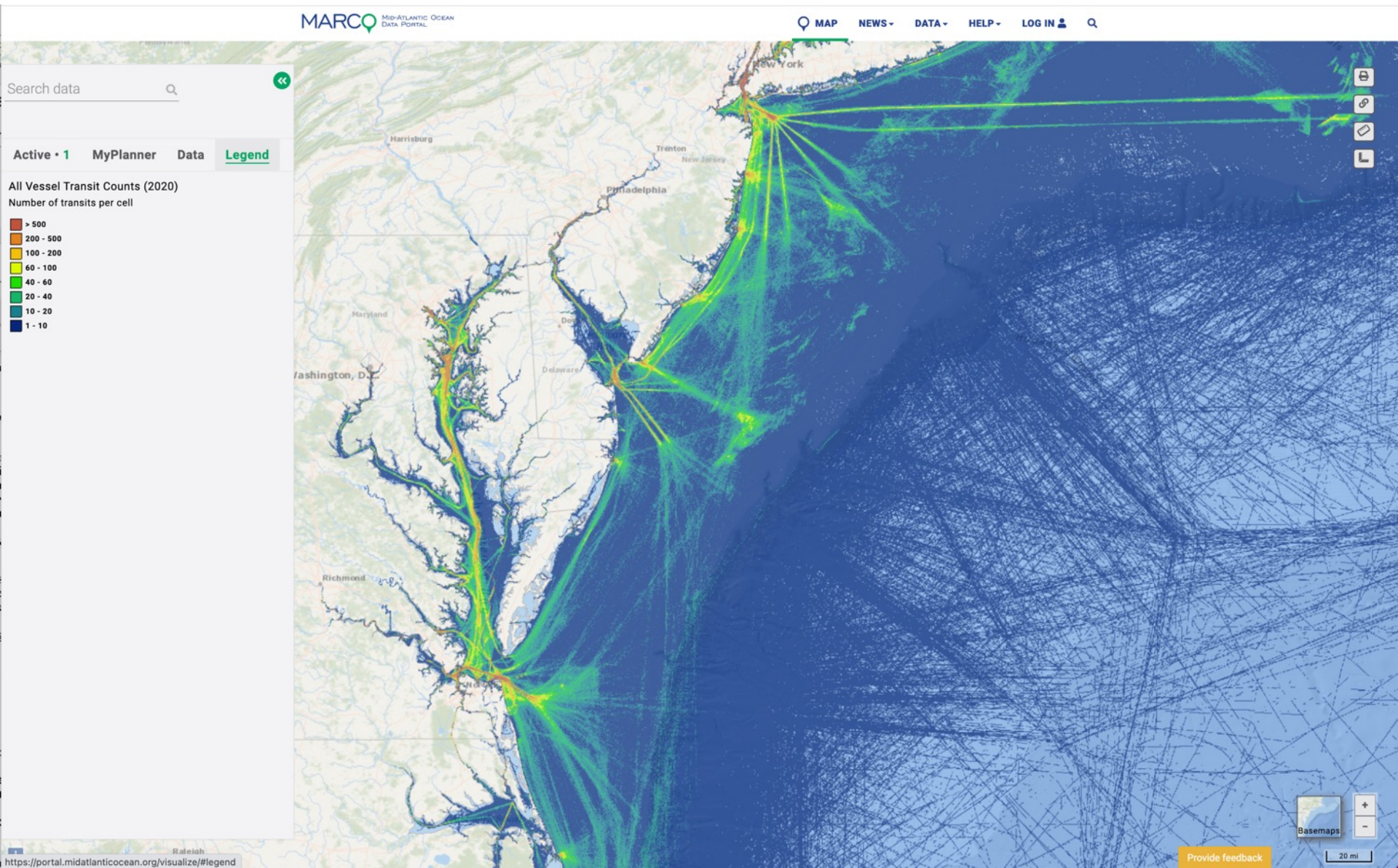
- Map products showing the footprint and changes over time for ocean activities and ecological resources
- Instructional and educational resources: Portal blog, “Ocean Stories,” webinars
- Tools for users to share maps and collaborate in groups

portal.midatlanticocean.org

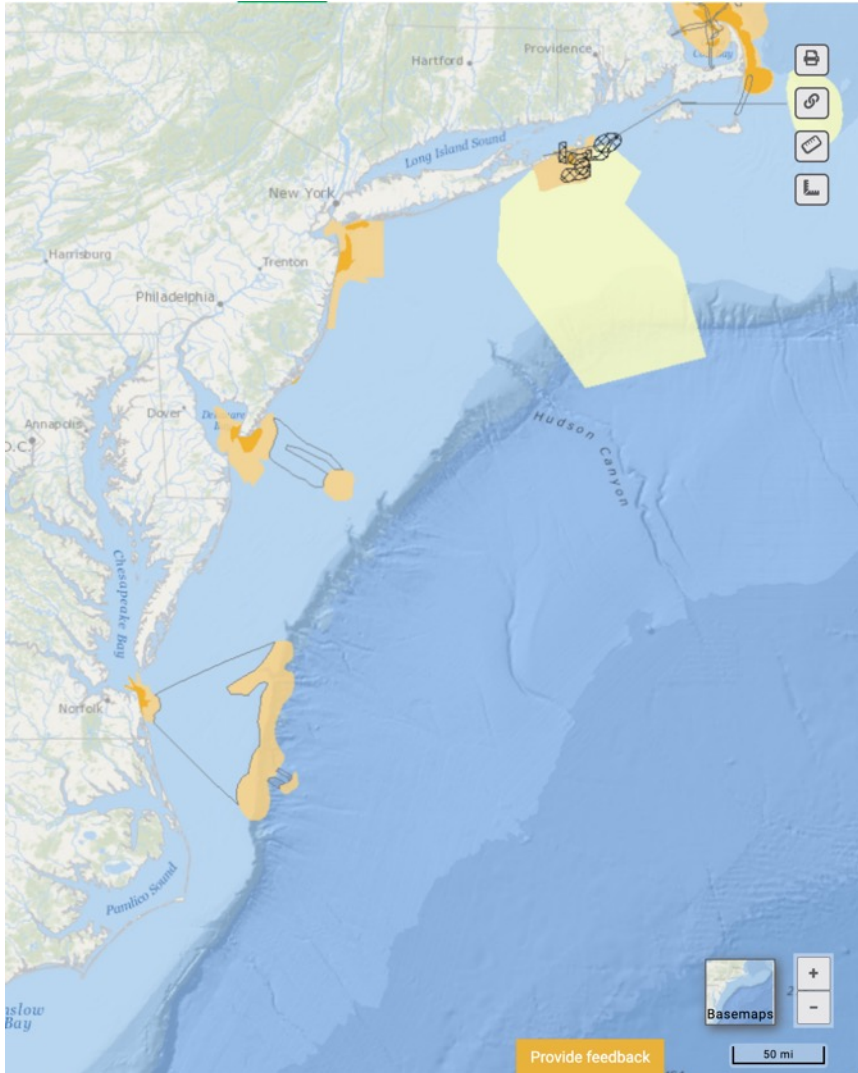
Maritime Data on the Portal



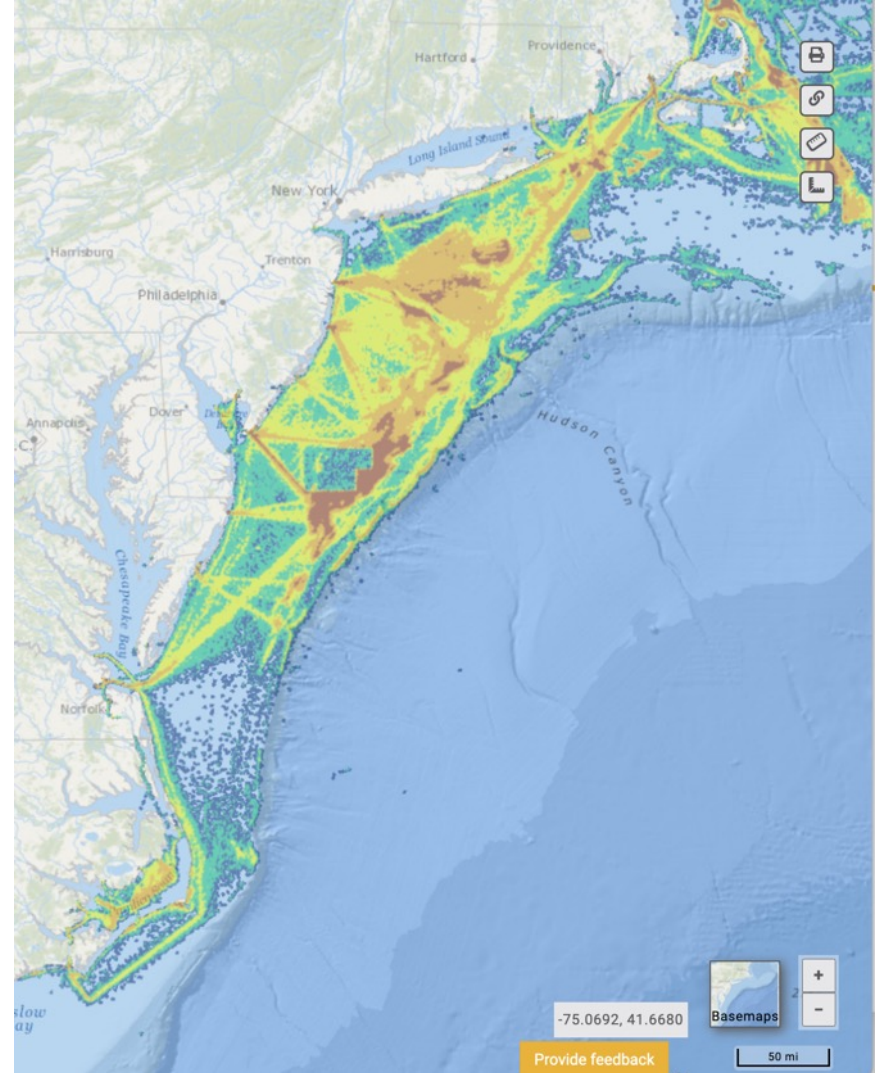
Maritime Data on the Portal



Maritime Data on the Portal

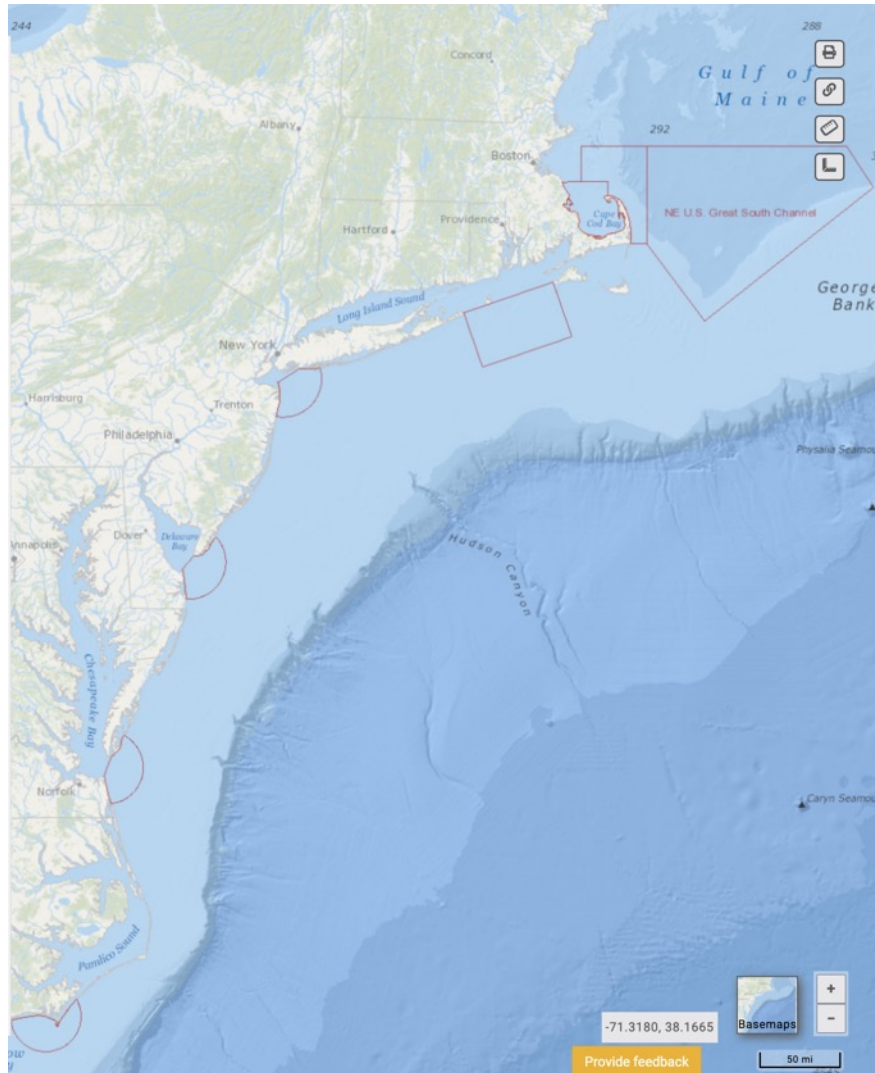


Whale and Dolphin Watch

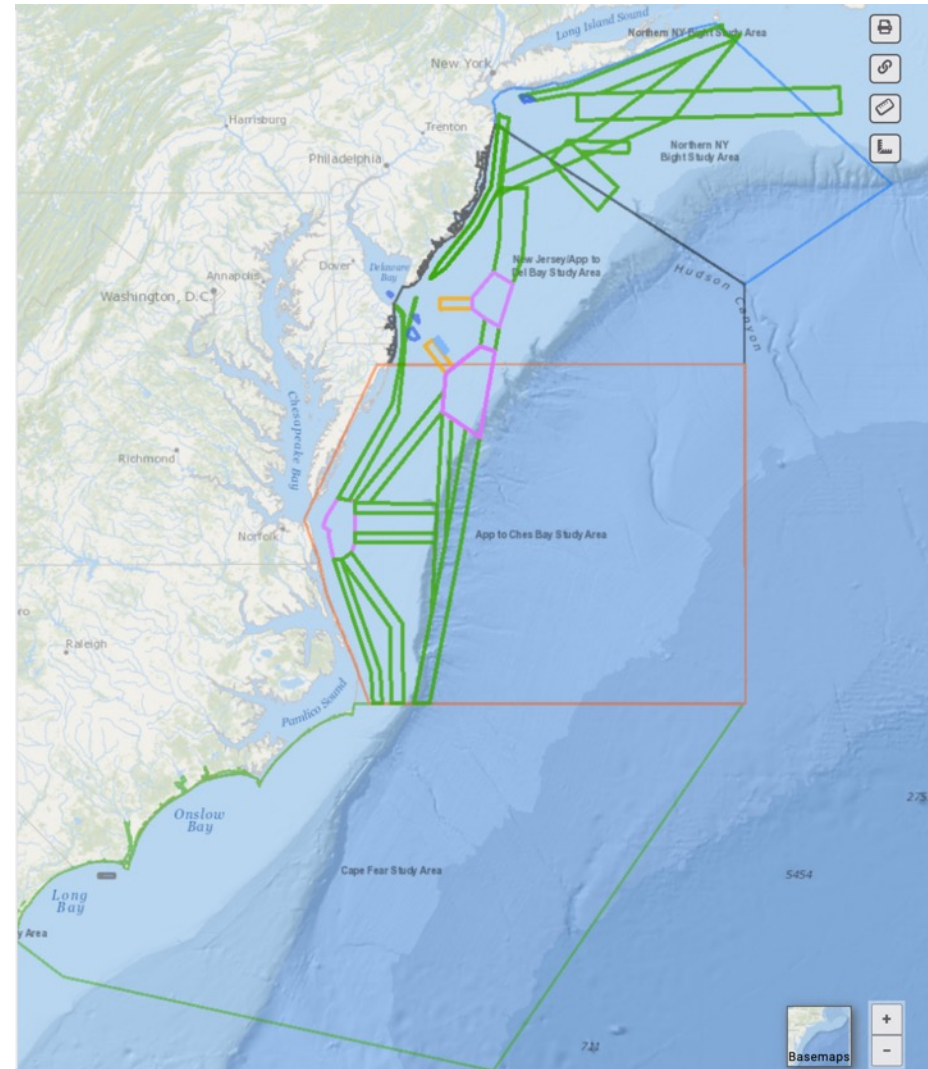


Scallop Vessel Activity 2015-2016

Management Actions Data on the Portal

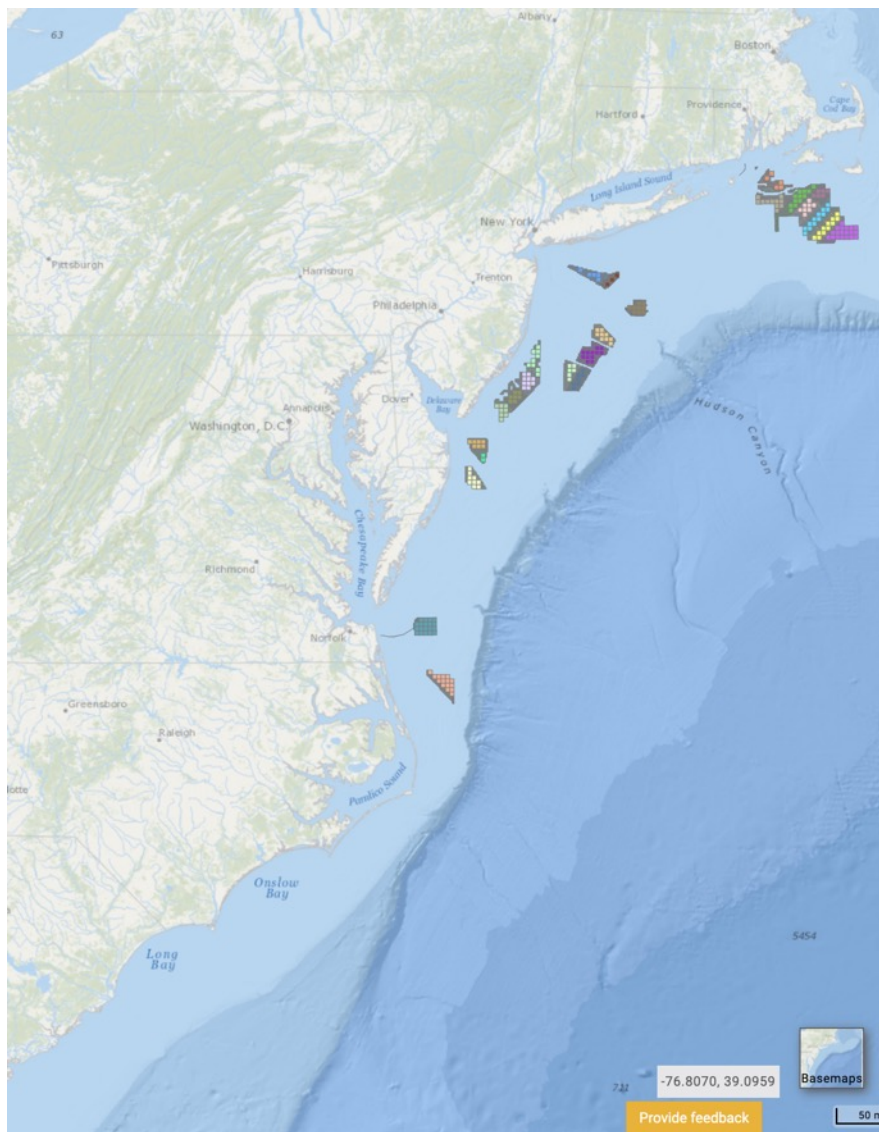


RW Seasonal Management Areas

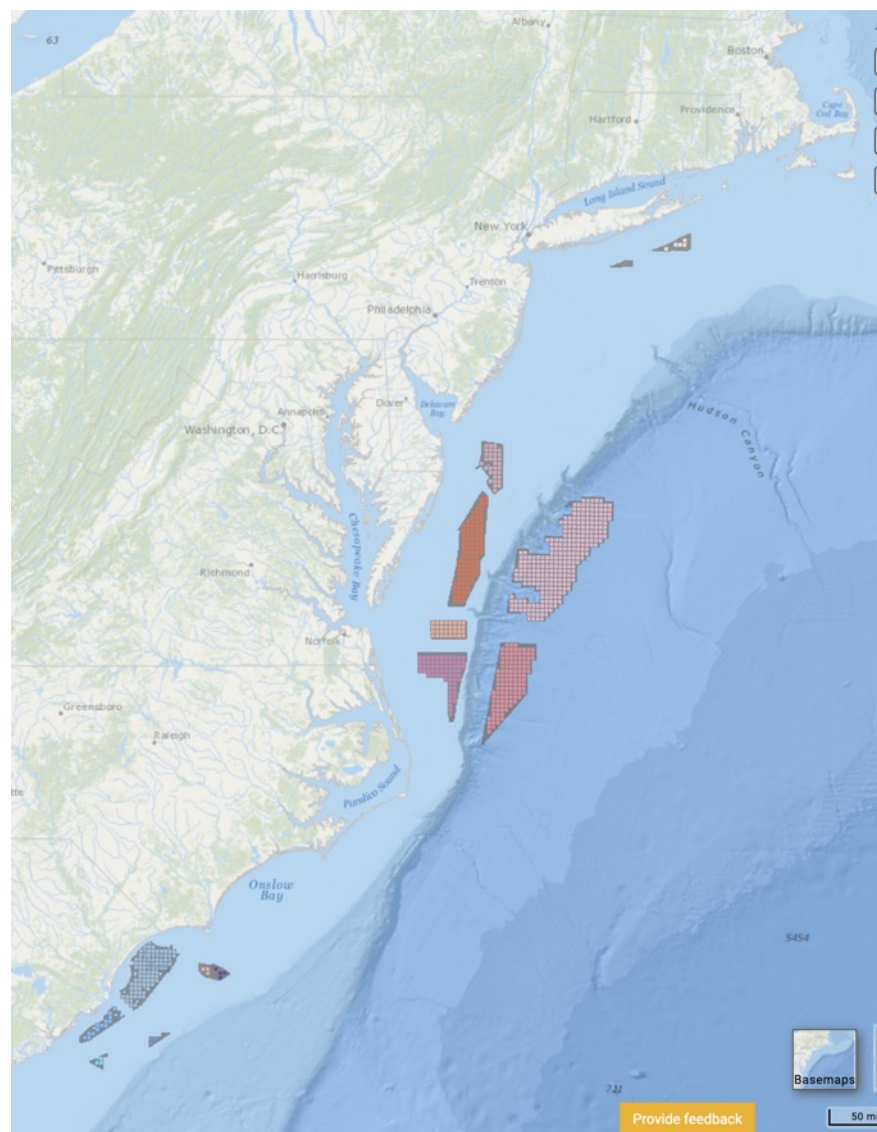


Port Access Route Studies

Management Actions Data on the Portal



Active Offshore Wind Leases



Wind Energy Planning Areas

Summary of Data Requests and Potential Future Work

- Port to port routes
- Space launch and recovery areas
- Potential conflicts such as anchoring and cables
- Potential future conditions:
 - Recent and planned changes in port infrastructure and potential resulting changes in maritime patterns
 - Deepening channels and resulting maritime patterns
 - Increased use of autonomous vessels
- Additional management actions that may affect future conditions

Maritime Outreach

- USCG Districts 1 & 5
- Associations – North Atlantic Ports Association, Chamber of Shipping of America, Pilots' Associations
- Port and Harbor Committees
- Whale and dolphin watch operators
- Fishing industry through the fishery management councils, RODA, individual fishing sector representatives and associations

Contacts and More Information

MARCO Mid-Atlantic Ocean Data Portal

MAP NEWS DATA HELP LOG IN

News

APRIL 28 **New England Port Access Route Study Map in...**
A map showing the boundary for the U.S. Coast Guard-led Approaches to Maine, New Hampshire, and Massachusetts Port Access Route Study (MANMADARS) is

APRIL 25 **Sand Resources Map Shows Areas Where...**
A Sand Resources map added to the Portal shows offshore areas where sediments usable for projects such as beach nourishment, shore protection and coastal wetlands.

APRIL 7 **Cetacean Data Products Now Reflect New North...**
The cetacean data products developed by the Marine life Data & Analysis Team (MDAT), including all summary products, now include the latest North Atlantic right

MARCH 25 **News from Our Partners**
The following are news releases issued by MARCO and its partner organizations related to ocean planning topics in the Mid-Atlantic region.

MARCH 25 **View Coast Guard's Amended Cape Fear...**
An anchorage area first proposed by the Coast Guard in 2020 to accommodate vessels near the approaches of the Cape Fear River in North Carolina has been amended.

MARCH 17 **Introducing the Indigenous Nations, ...**
The Mid-Atlantic Ocean Data Portal has assembled a new Indigenous Nations, Communities & Cultures map collection to assist with ocean planning and improve

Provide feedback

Nick Napoli

nicknapoli01@gmail.com

Karl Vilacoba

kvilacob@monmouth.edu

portal.midatlanticocean.org



@PortalMARCO