

Blue Carbon as a Climate Change Mitigation Strategy in New Jersey

Presenting author: Metthea Yepsen

Metthea.Yepsen@dep.nj.gov

The New Jersey Department of Environmental Protection

Co-Authors:

David DuMont

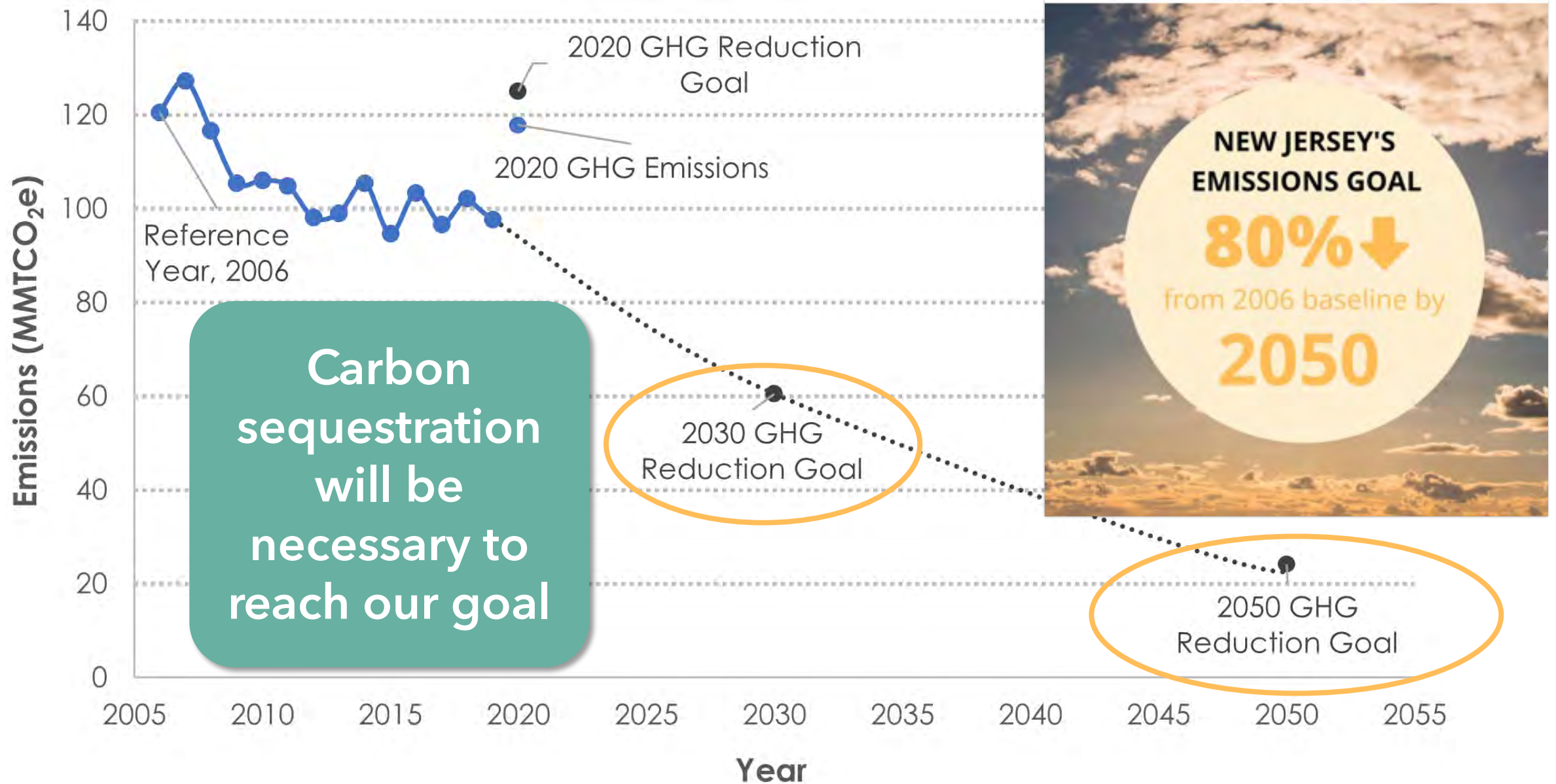
Julie Blum

Helaine Barr



**NEW JERSEY
DEPARTMENT OF
ENVIRONMENTAL
PROTECTION**

New Jersey's Greenhouse Gas Reduction Targets



"Blue" Carbon Sequestration in NJ

Natural and Working Lands
Strategy

Regional Greenhouse Gas
Initiative

Coastal Ecological Restoration
and Adaptation Plan

Natural and Working Lands Strategy



Forests

Agriculture & Aquaculture

Grasslands

Wetlands

Developed Lands

Aquatic Resources & Habitats



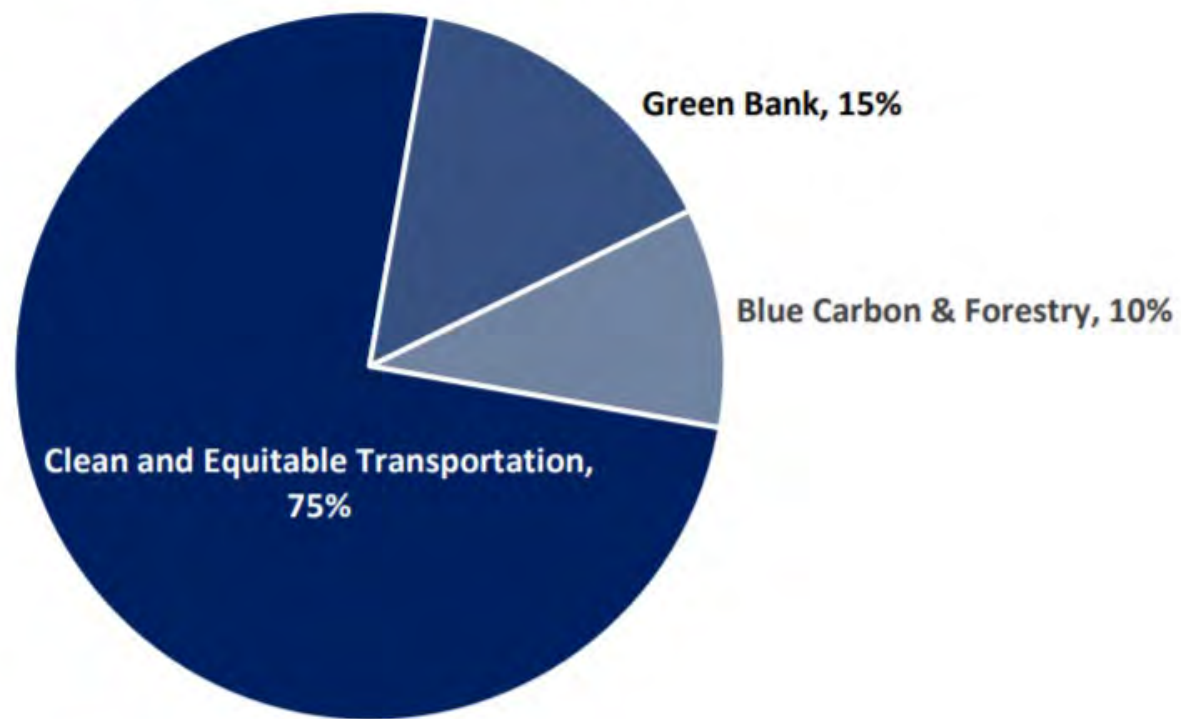
RGGI REGIONAL GREENHOUSE GAS INITIATIVE STRATEGIC FUNDING PLAN

YEARS 2020 THROUGH 2022



Dedicated Funding for Sequestration

PERCENTAGE OF FUNDING BY INITIATIVE





RGGI REGIONAL
GREENHOUSE
GAS INITIATIVE

NATURAL CLIMATE SOLUTIONS GRANTS

BLUE AND GREEN CARBON PROJECTS

The Natural Climate Solutions Grant program will fund on-the-ground implementation of projects that create, restore, and enhance New Jersey's natural carbon sinks, such as salt marshes, seagrass beds, forests, urban parks and woodlands, and street trees.

Up to \$15 million dollars for blue and green carbon projects. This funding is made available due to New Jersey's participation in the [Regional Greenhouse Gas Initiative \(RGGI\)](https://www.nj.gov/dep/climatechange/mitigation/ncs-grant.html), which provides the State with auction proceeds to invest in programs and projects designed to help meet its climate, clean energy, and equity goals.

<https://www.nj.gov/dep/climatechange/mitigation/ncs-grant.html>

What makes a good Blue carbon project?

Increase
Salinity

Increase salinity in impounded or tidally restricted fresh and brackish marshes

Protect

Protect carbon stored in salt marsh soil

Restore

Restore vegetation in drowning salt marshes

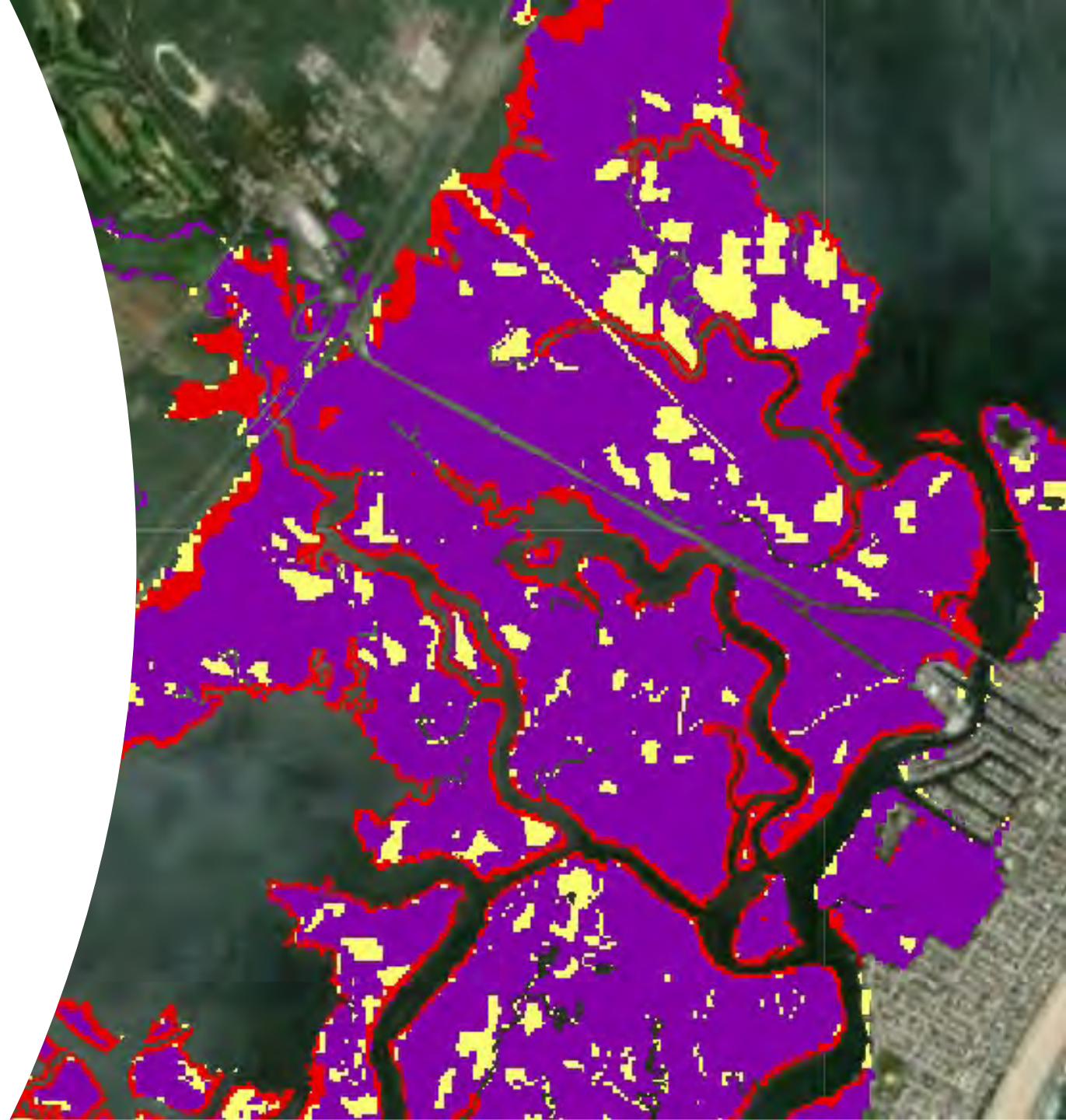
Facilitate

Facilitate marsh migration and protect salt marsh migration zones



Coastal Ecological Restoration and Adaptation Plan (CERAP)

- EPA funded project;
- Participatory GIS Id of important tidal wetland sites based on local knowledge and priorities;
- Characterizes and assesses prospective projects based on Issues of Concern (IOCs);
- Guides NJDEP restoration priorities and state resources including funding and grant match



Contact Information:

Metthea Yepsen

Research Scientist

Division of Science and Research

NJ Department of Environmental
Protection

Metthea.Yepsen@dep.nj.gov

